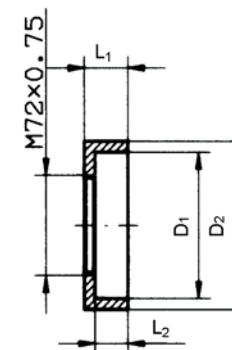


**Lens adapter for Wide Angle Attachment 0.8x and Tele Conversion Lens 1.25x  
with M72x0.75mm connection thread**

Pos.	For use with		Part order no.		Adapter ring			
	WWV 0,8x	TCV 1,25x	wide angle attachment, adapter part order no. (105.00....)	tele conversion lens, adapter part order no. (105.00....)	prime lens mech. outer diameter D <sub>1</sub> [mm]	diameter opening of housing D <sub>2</sub> [mm]	width of adapter L <sub>1</sub> [mm]	L <sub>2</sub> [mm]
1.	x	x	357.01.01	370.01.01	64,0	67,0	25,0	20,0
2.	x	x	357.09.01	370.09.01	65,1	67,0	25,0	20,0
3.	x	x	357.02.03	370.02.03	67,0	71,0	17,0	12,0
4.	x	x	357.01.03	370.01.03	70,0	73,0	20,0	14,0
5.	x	x	357.10.01	370.10.01	70,0	73,0	20,0	14,0
6.	x	x	357.18.01	370.18.01	70,5	76,5	9,0	28,5
7.	x	x	357.02.02	370.02.02	73,0	75,0	14,0	7,0
8.	x	x	357.75.01	370.75.01	75,0	81,0	15,0	10,0
9.	x	x	357.02.01	370.02.01	77,0	83,0	12,0	7,0
10.	x	x	357.11.01	370.11.01	78,0	91,0	14,5	10,5
11.	x	x	357.13.01	370.13.01	78,0	90,0	8,5	3,5
12.	x	x	357.07.01	370.07.01	79,0	83,0	15,0	10,0
13.	x	x	357.05.01	370.05.01	80,0	85,0	15,0	10,0
14.	x	x	357.82.01	370.82.01	82,0	85,9	15,0	10,0
15.	x	x	357.82.02	370.82.02	82,4	85,0	15,0	10,0
16.	x	x	357.82.03	370.82.03	82,8	88,0	12,0	7,0
17.	x	x	357.01.02	370.01.02	84,0	87,0	14,0	10,0
18.	x	x	357.10.03	370.10.03	84,0	87,0	14,0	10,0
19.	x	x	357.86.01	370.86.01	86,0	91,0	17,0	12,0
20.	x	x	357.06.02	370.06.02	88,0	92,0	15,0	10,0
21.	x	x	357.06.01	370.06.01	89,1	92,0	15,0	10,0
22.	x	x	357.03.01	370.03.01	92,2	95,0	16,0	12,0
23.	x	x	357.04.00	370.04.00	95,0	99,0	23,5	19,1
24.	x	x	357.12.01	370.12.01	103,0	107,0	26,5	18,0
etc...								

**Adapter ring  
(cross-section)**



D<sub>1</sub> = diameter  
lens

D<sub>2</sub> = diameter  
housing opening

Please check our website under [www.iscoprecisionoptics.com/isco\\_new\\_e/data\\_video\\_e.html](http://www.iscoprecisionoptics.com/isco_new_e/data_video_e.html)  
for updated information on new projector specific adapters.